

Multi-Live

V1.01

For

Wireless Network Camera

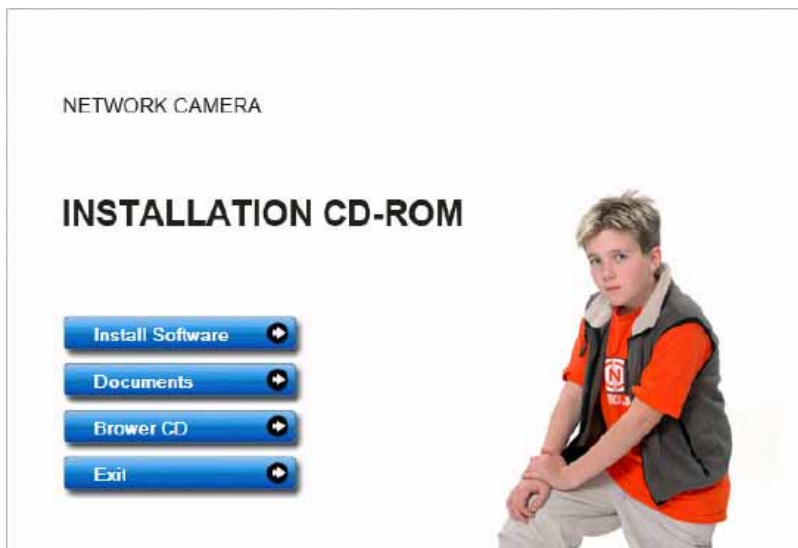


Please read this manual carefully before you attempt to use this software and retain it for your future reference.

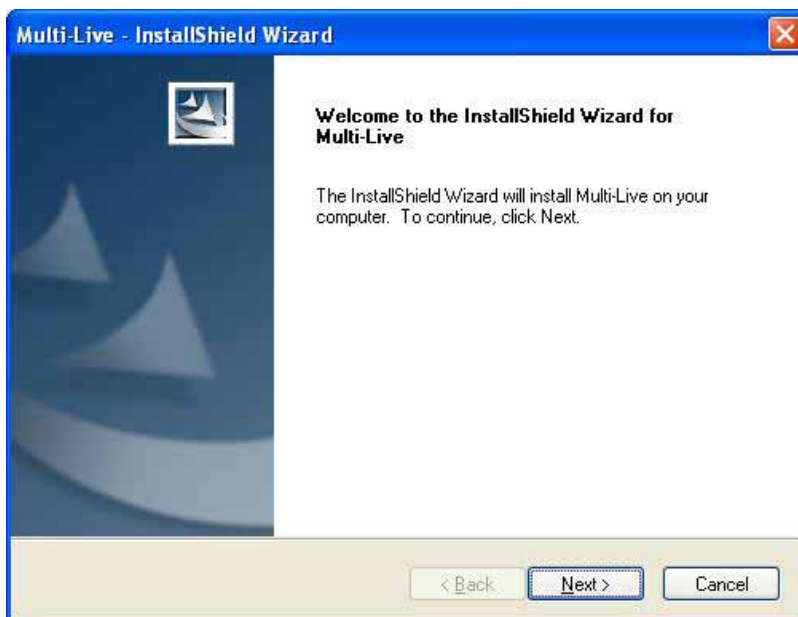
Multi-Live Installation

You can watch more than one surveillance interfaces (sixteen most) via Multi-Live program. Also you can use it to record video. Follow the instructions to install Multi-Live program.


1. Start your PC.
2. Insert the Setup CD-ROM in the CD-ROM drive of the PC. (If Network Camera Setup window does not appear, click "setup.exe" on the Setup CD-ROM.)
3. Network Camera Setup window will automatically pop up.

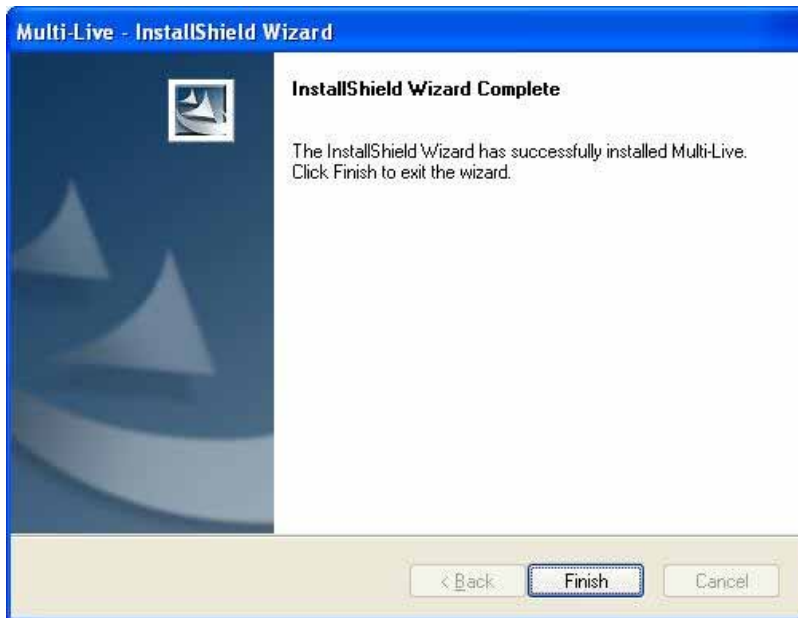


4. Click on Install Software, select Multi-Live Setup, the InstallShield Wizard will pop up. Click Next to install Multi-Live according to the wizard.





5. After installation, click Finish. The shortcut icon  will be created on the desktop.



Use Multi-Live



Double click the icon **Multi-Live** on the desktop after installing the Multi-Live. The following interface will pop up.

Menu Bar

Tool Bar

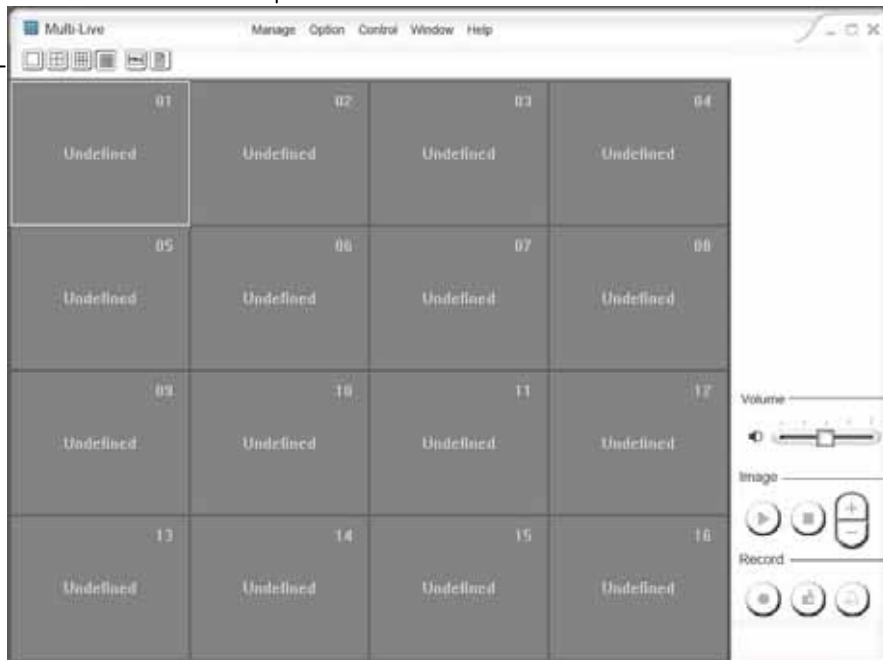


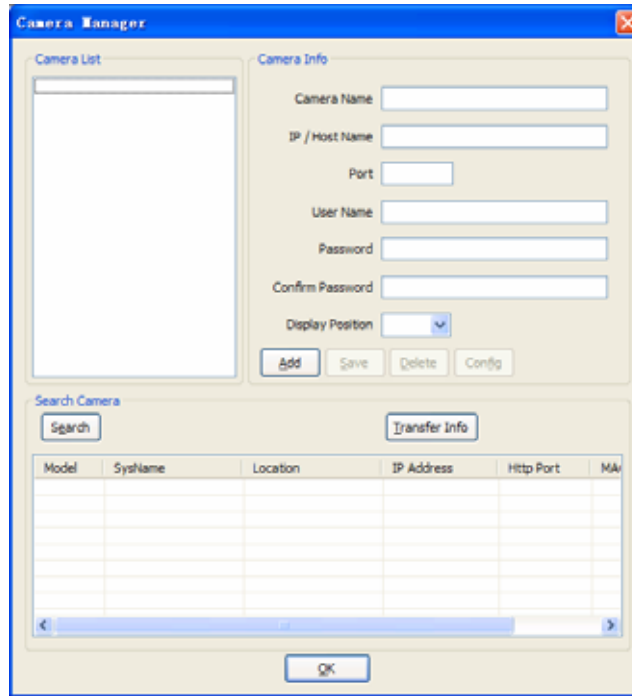
Image Field

Operating Bar

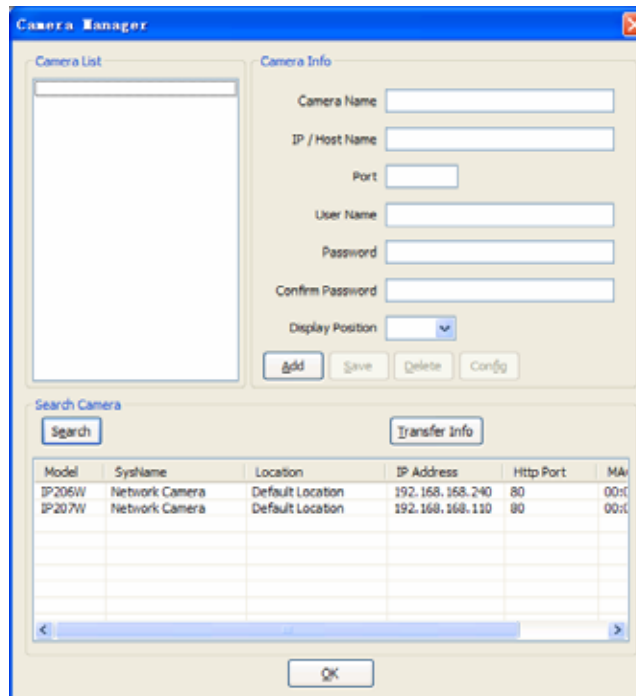
Camera Manage

Only adding the camera to the Camera List can you watch the surveillance via Multi-Live.

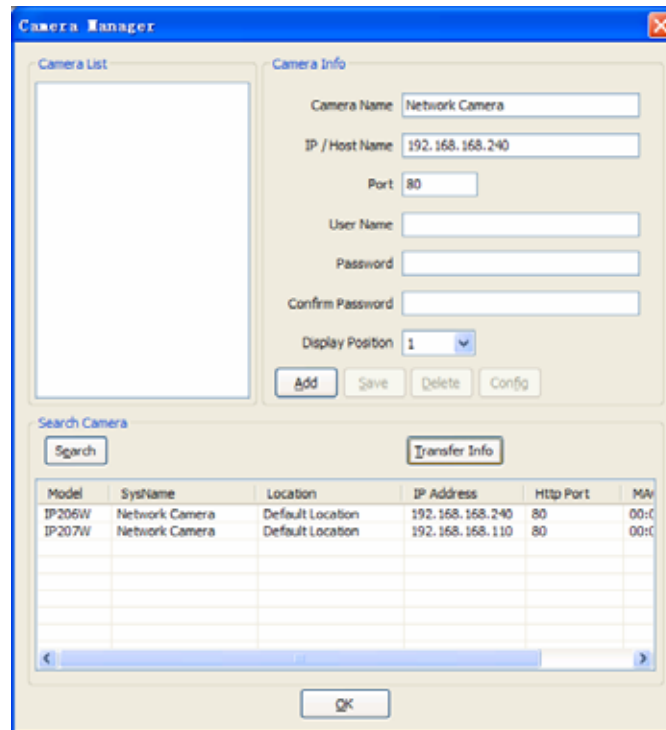
1. Select the Manage-Camera Manage on the menu bar, the following interface will pop up.



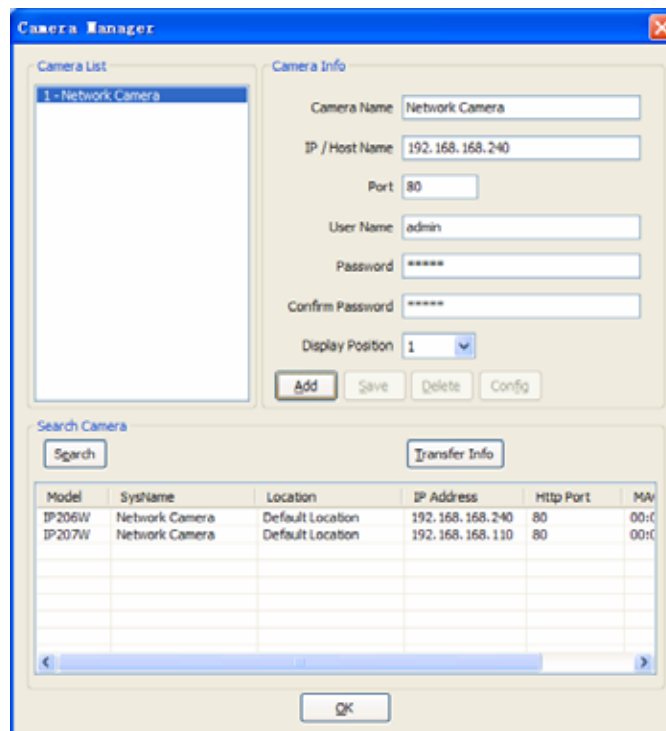
2. Click Search, search the IP cameras on the LAN.



3. Select one camera you've searched, and click Transfer Info to List.



4. Type Camera Name, IP/Host Name, Port, User Name and password correctly on the blank and then click Add. If the password is wrong, you will be unable to connect camera.



5. Click one camera in the Camera List then you can modify or delete the camera information.

The screenshot shows the 'Camera Manager' application window. It is divided into three main sections:

- Camera List:** A list box containing one entry: '1 - Network Camera'.
- Camera Info:** A configuration panel with the following fields:
 - Camera Name: Network Camera
 - IP / Host Name: 192.168.168.240
 - Port: 80
 - User Name: admin
 - Password: *****
 - Confirm Password: *****
 - Display Position: 1 (dropdown menu)Buttons: Add, Save, Delete, Config.
- Search Camera:** A table with columns: Model, SysName, Location, IP Address, Http Port, MA. It contains two rows of data:

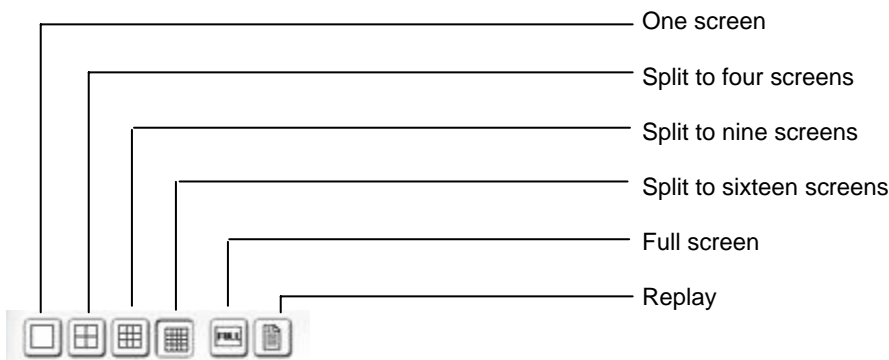
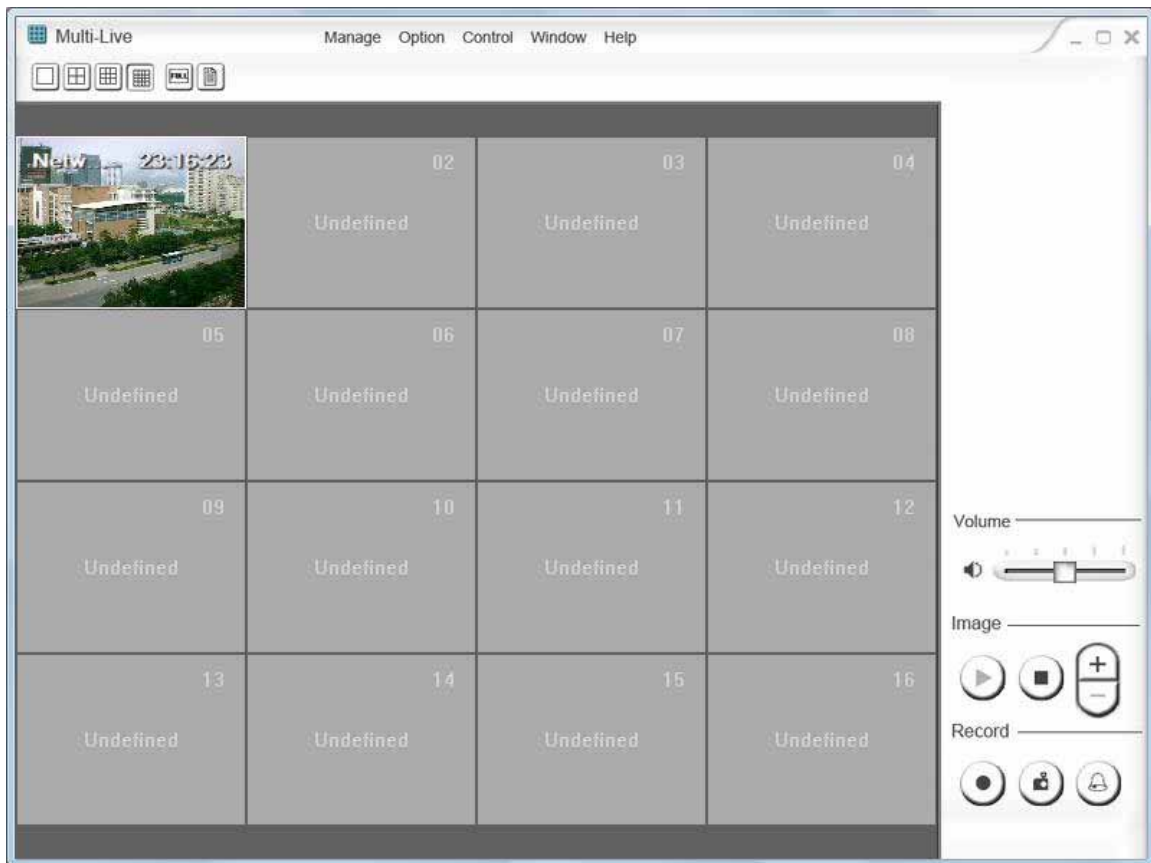
Model	SysName	Location	IP Address	Http Port	MA
IP206W	Network Camera	Default Location	192.168.168.240	80	00:0
IP207W	Network Camera	Default Location	192.168.168.110	80	00:0

Buttons: Search, Transfer Info. An OK button is located at the bottom center of the window.

6. Click OK to confirm your settings.

Operating Bar

After adding the camera to the camera list successfully, the interface will be shown as below:

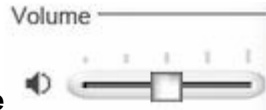


(1) Split Screen

Four kinds of screens for your request: 1,4,9 and 16. You also can select the screen type via Window-Split Screen (1/4/9/16) and Full Screen on the menu bar.

(2) Replay

Click this button, you will go to the path you have saved the record files. Then you can play the record files directly.




(3) Volume

Slide the slide block horizontally to adjust volume.



(4) Image Connect & Disconnect

Click to connect  to audio and video of the IP camera.

Click to disconnect  to the audio and video of the IP camera.

You also can connect and disconnect via Control-Connect on the menu bar. To connect & disconnect all IP cameras, click Control-Connect-Connect All & Disconnect All on the menu bar.



(5) Zoom in/Zoom out

Click on + button and the cursor turns to a magnifier. Move the magnifier to the desired location and click on an image area. Press – button to return to the normal view.

Record



(6) Record

Click once to start a record, click one more time to stop record.

You also can enable & disable the record function via Control-Record-Start Record & Stop Record on the menu bar. To start & stop to record all IP cameras, click Control-Record-Start Record All & Stop Record All on the menu bar.



(7) Snapshot

Click this button to capture a still image, and you can save it.

Check Control-Snapshot on the menu to capture a still image of the moment when you click.



(8) Alarm

Click once to enable the alarm function, click one more time to disable alarm function. The alarm setting up should be done on the alarm setup web interface, please refer to UserManual for IP Camera.

You also can enable & disable the alarm function via Control-Alarm on the menu bar.

To enable & disable alarms on all IP cameras, click Control-Alarm-Enable All Alarm & Disable All Alarm on the menu bar.

(9) Mute

Check Manage-Mute on the menu, you will turn off the sound on the Multi-Live IP Camera.

(10) Toolbar&Control Panel

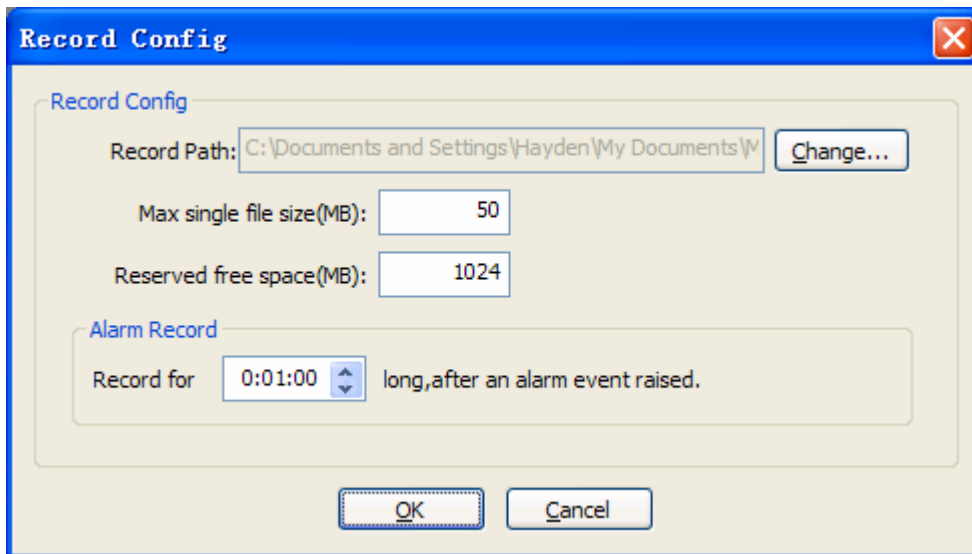
Check Window-Toolbar or Control Panel on the menu to show the toolbar or the control panel.

(11) Aspect Ratio(4:3)

Check Window-Aspect Ratio(4:3) on the menu to set video screen.

(12) Record Config

Select Option-Record Config to enter the record config interface. You can set the record path, max file size, reserved free space and alarm record time here. The record time here is the time when motion detection alarm trigger, but not the record time you enable record function. Click OK to confirm your settings.



The image shows a 'Record Config' dialog box with a blue title bar and a close button (X) in the top right corner. The dialog is divided into two sections: 'Record Config' and 'Alarm Record'. In the 'Record Config' section, there is a text field for 'Record Path' containing 'C:\Documents and Settings\Hayden\My Documents\W', a 'Change...' button to its right, a 'Max single file size(MB)' field with the value '50', and a 'Reserved free space(MB)' field with the value '1024'. The 'Alarm Record' section contains a 'Record for' label, a spinner box set to '0:01:00', and the text 'long, after an alarm event raised.' At the bottom of the dialog are 'OK' and 'Cancel' buttons.